



INSTRUCTION BULLETIN

No. 9012870
Machine: T17 / M17
Published: 05-2016
Rev. 01

NOTE: DO NOT DISCARD the Parts List from the Instruction Bulletin. Place the Parts List in the appropriate place in the machine manual for future reference. Retaining the Parts List will make it easier to reorder individual parts and will save the cost of ordering an entire kit.

NOTE: Numbers in parenthesis () are reference numbers for parts listed in Bill of Materials.

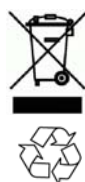
Installation instructions for **kit number 9020076**

SYNOPSIS:

This kit contains the parts needed to install an optional spray hose kit onto T17 scrubbers / M17 sweeper- scrubbers.
Please follow step-by-step instructions.

SPECIAL TOOLS / CONSIDERATIONS: NONE

(Estimated time to complete: 5 hours)



PROTECT THE ENVIRONMENT

Please dispose of packaging materials, used machine components such as batteries and fluids in an environmentally safe way according to local waste disposal regulations.

Always remember to recycle.

PREPARATION:

1. Completely empty the solution and recovery tank. Refer to the Operator Manual for instruction how to empty both tanks.
2. **Machines equipped with optional detergent tank only:** Completely empty the detergent tank.
3. Park the machine on a clean level surface, lower the scrub head, turn off the machine, set the parking brake, and remove the key.

FOR SAFETY: Before leaving or servicing machine, stop on level surface, turn off machine, and remove key.

4. Disconnect the battery cable from the machine.



WARNING: Always disconnect battery cables from machine before working on electrical components.

5. Remove the left shroud from the machine. Set the shroud aside.
6. Disconnect the main wire harness from the vacuum fan(s) and remove the vacuum fan(s) from the machine. Set the vacuum fan(s) and all mounting hardware aside.
7. **Machines equipped with optional detergent tank only:** Disconnect the hose from the detergent tank suction tube and remove the detergent tank from the machine. Set the detergent tank and all mounting hardware aside.
8. **Machines equipped with cylindrical scrub heads only:** Remove the debris trough from the scrub head. Set the debris trough aside.

INSTALLATION:

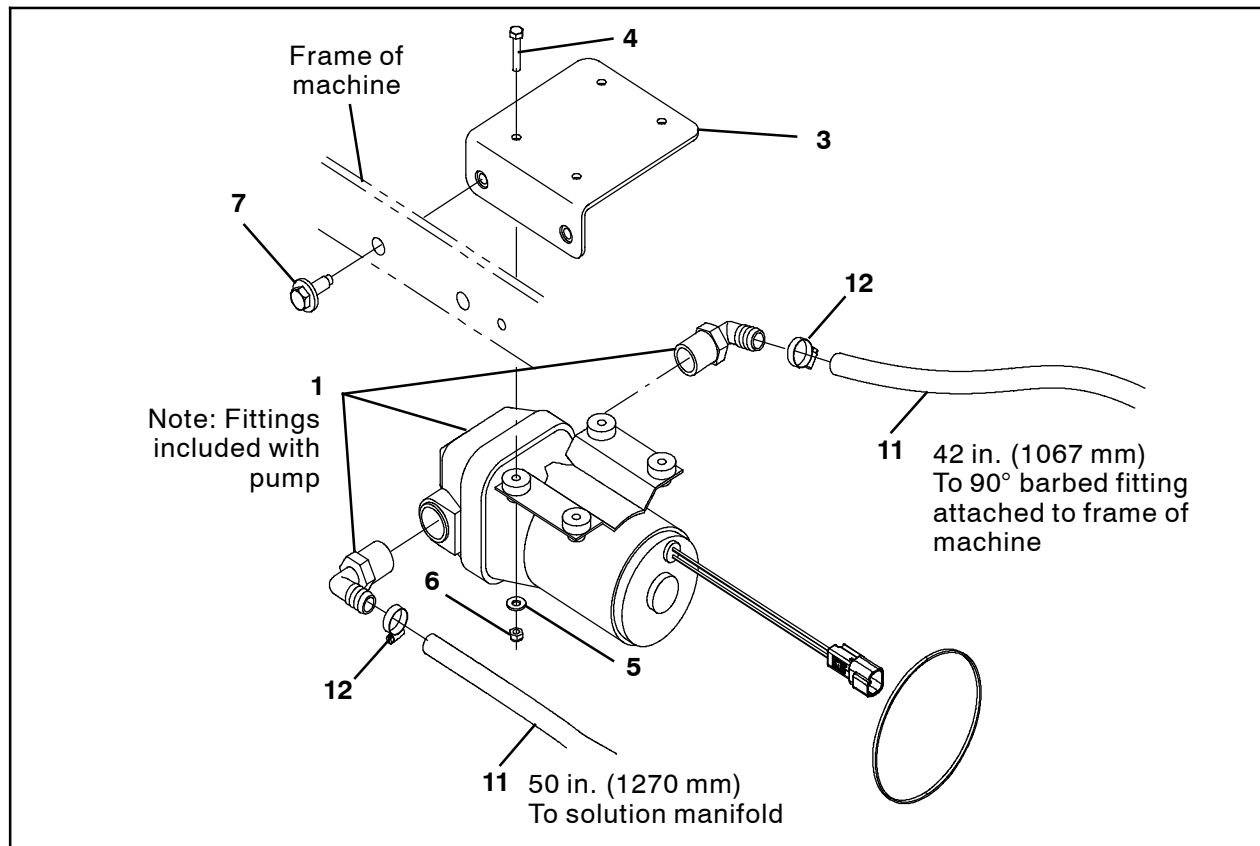


FIG. 1

NOTE: ***Do Not** cut the band holding the spray hose into the spray hose reel until after the spray hose assembly is installed onto the machine.*

NOTE: *Refer to **RESETTING REEL ASSEMBLY SPRING TENSION** at the end of this IB for instructions how to reset the reel assembly tension for the spray hose if the hose should come unwound from the reel assembly.*

1. Use four M5 hex screws (4), four flat washers (5), and four M5 hex nuts (6) to install the spray hose pump bracket (3) onto the solution pump (1). (Fig. 1)
2. Install fittings included with the solution pump (1) onto the solution pump. (Fig. 1)
3. Cut a 42 in. (1067 mm), 50 in. (1270 mm), and 36 in. (914 mm) length of hose from the 144 in. (3657 mm) hose (11).
4. Use a hose clamp (12) to install the 42 in. (1067 mm) PVC hose (11) and 50 in. (1270 mm) PVC hose (11) onto the fittings installed on the solution pump (1). (Fig. 1)
5. Set the 36 in. (914 mm) hose (11) aside.

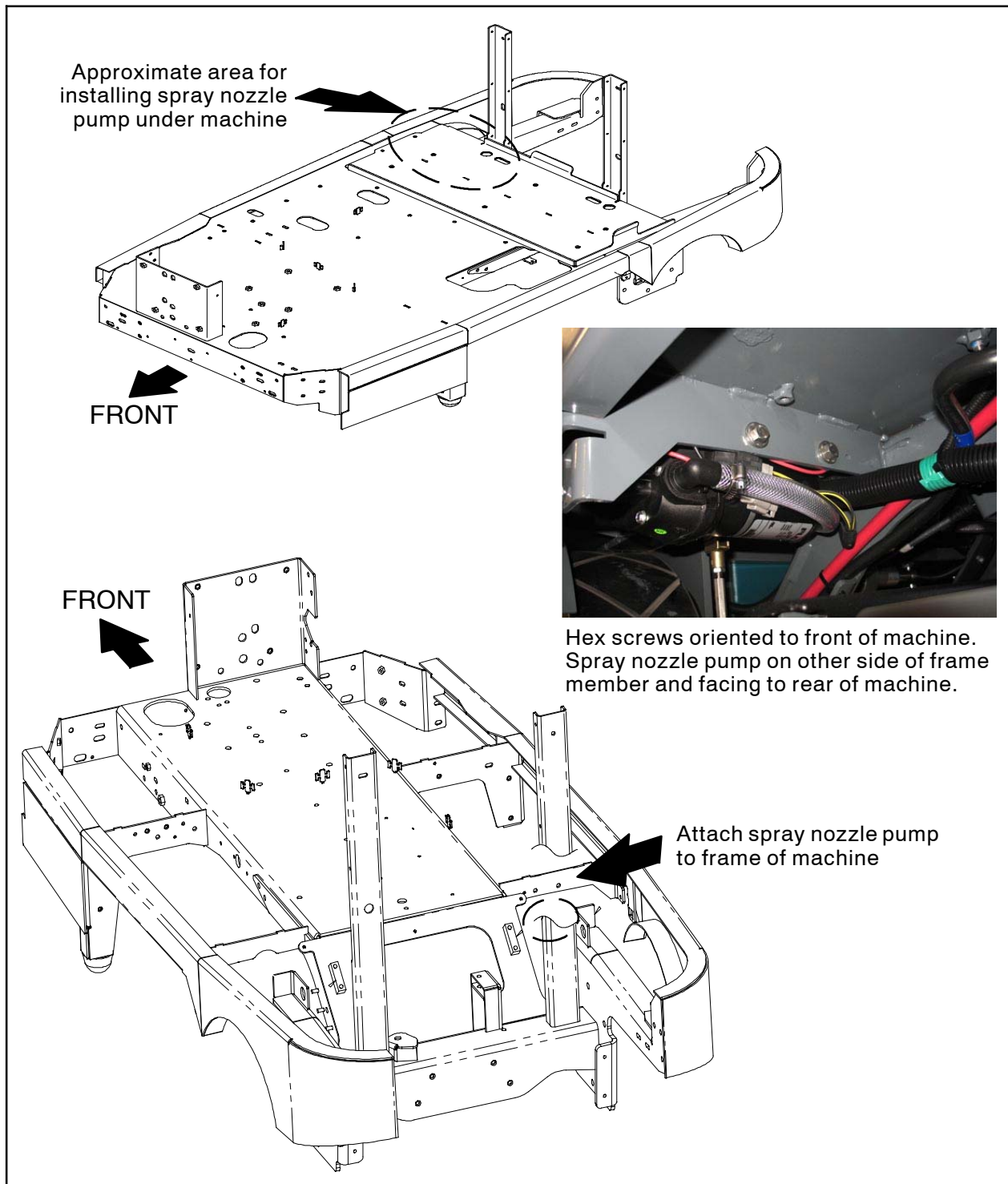


FIG. 2

6. Use two M8 SEMS hex screws (7) to install the pump assembly assembled in the previous several steps onto the frame of the machine. (Fig. 2)
7. Connect the main wire harness to the solution pump (1). (Fig. 1 / Fig. 2 / Fig. 3 / Fig. 12)
8. Connect the diode (2) to the main wire harness. (Fig. 3 / Fig. 12)

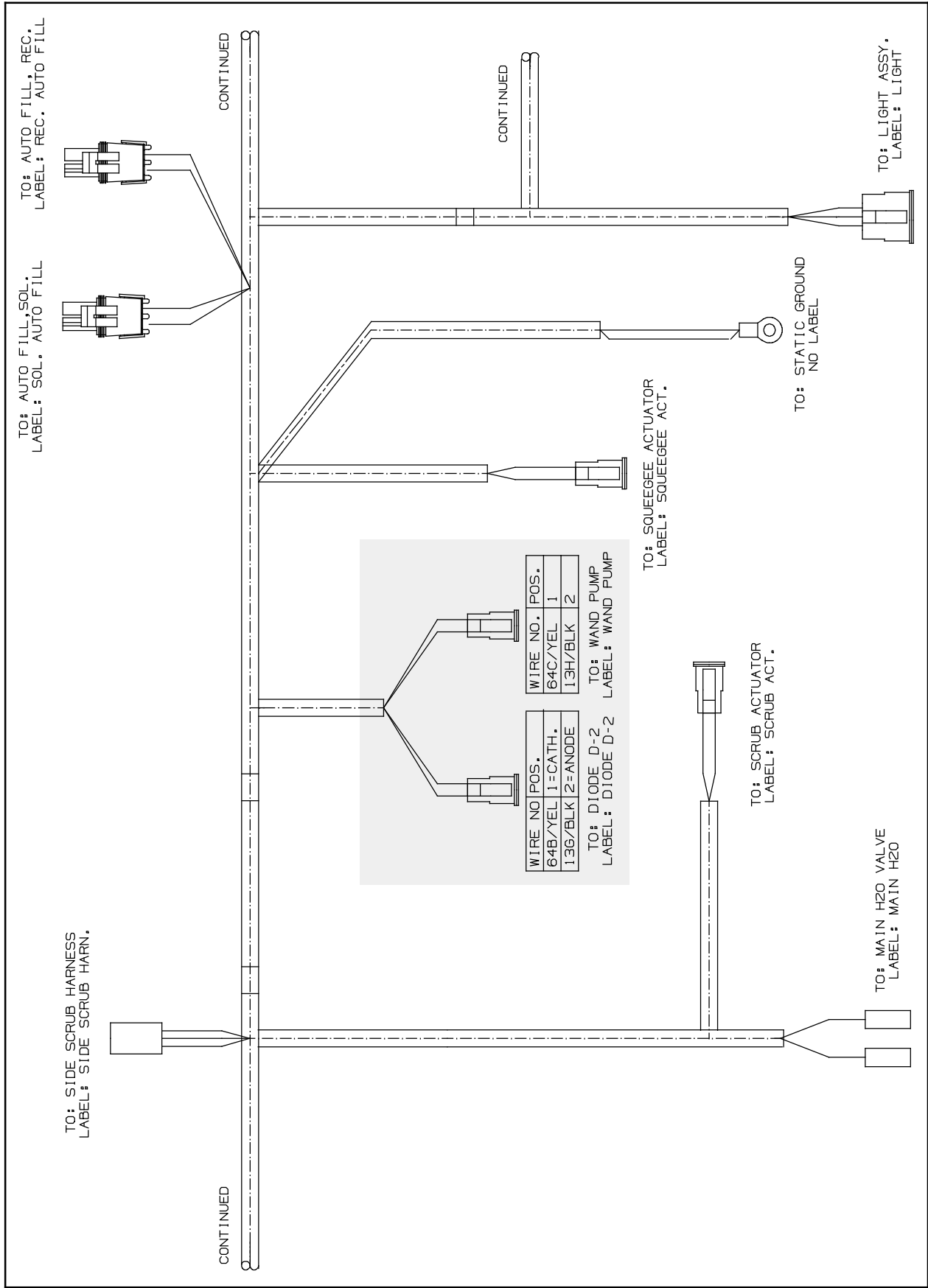


FIG. 3

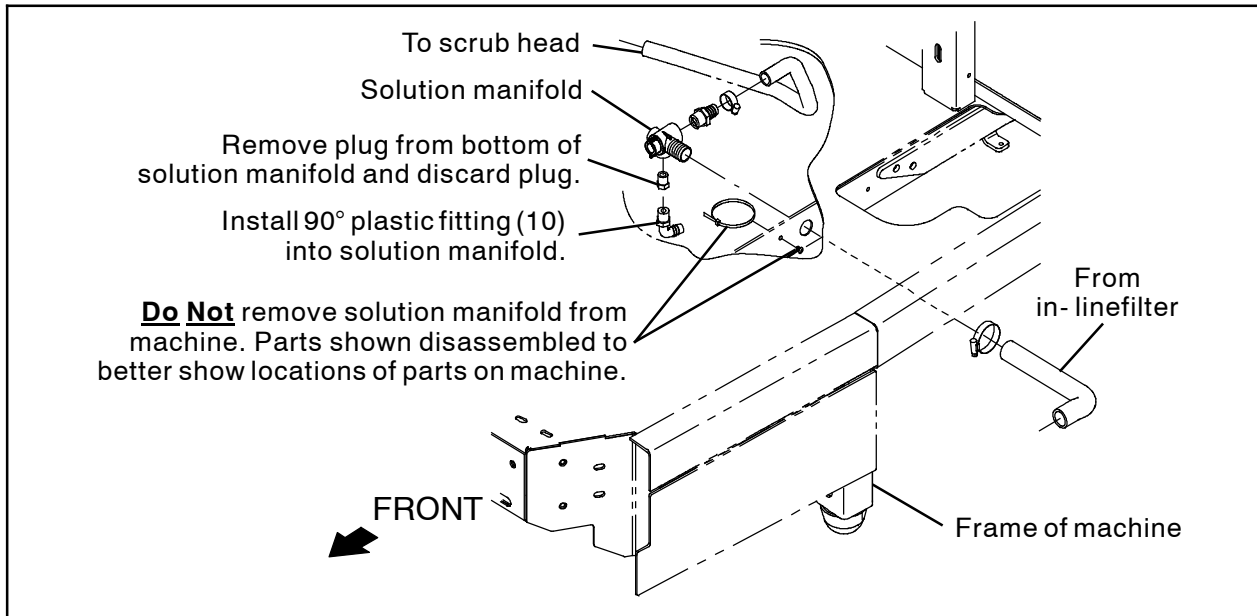


FIG. 4

9. Remove the plug from the bottom of the solution manifold. Discard the plug. (Fig. 4)

10. Install the 90° plastic fitting (10) into the solution manifold. (Fig. 4)

11. Route the 50 in. (1270 mm) PVC hose (11) from the solution pump (1), through the frame of the machine, and to the solution manifold. (Fig. 4 / Fig. 5)

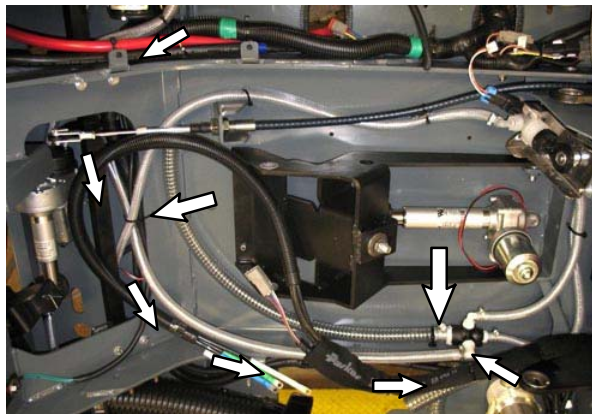


FIG. 5

12. Use a hose clamp (12) to secure the 50 in. (1270 mm) PVC hose (11) to the 90° plastic fitting (10) into the solution manifold. (Fig. 4 / Fig. 5)

13. Use a cable tie (13) to secure the 50 in. (1270 mm) PVC hose (11) away from the scrub head and any other moving parts. (Fig. 5)

14. Install the 90° plastic fitting (14) onto the end of the 42 in. (1067 mm) PVC hose (11).

15. Route the 42 in. (1067 mm) PVC hose (11) from the solution pump (1), through the frame of the machine, and through the hole in the frame of the machine. (Fig. 6 / Fig. 7)

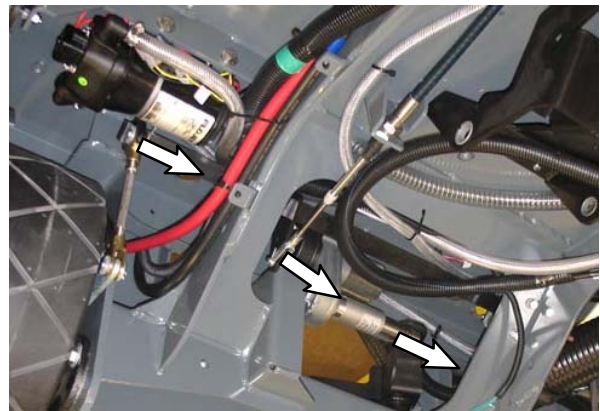


FIG. 6

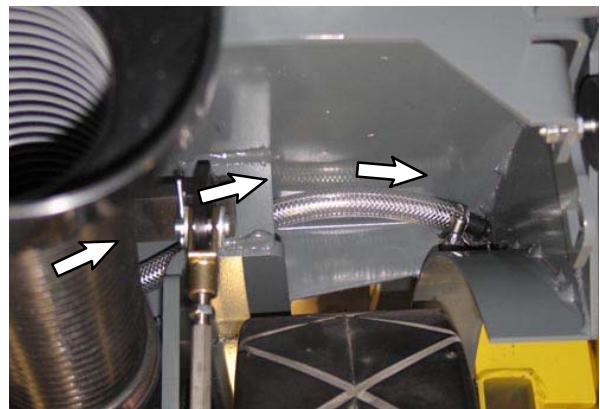


FIG. 7

- Route the the 36 in. (914 mm) PVC hose (11) through the hole in the frame of the machine oriented to the rear of the machine and use a hose clamp (12) to connect the hose to the 90° plastic fitting (14) connected to the 42 in. (1067 mm) PVC hose (11). (Fig. 8)

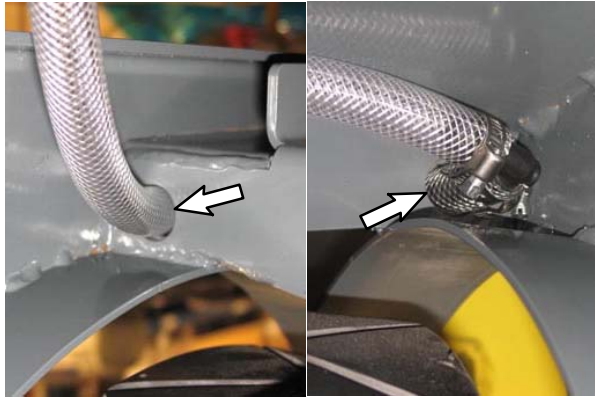


FIG. 8

- Use three M8 SEMS hex screws (16) to install the hose reel assembly onto the recovery tank (Fig. 9)
- Route the 36 in. (914 mm) PVC hose (11) up to the hose reel assembly and use a hose clamp (12) to connect the hose to the 90° brass fitting (34) on the hose reel assembly. (Fig. 8 / Fig. 9)
- Cut the band holding the spray hose in the spray hose assembly.

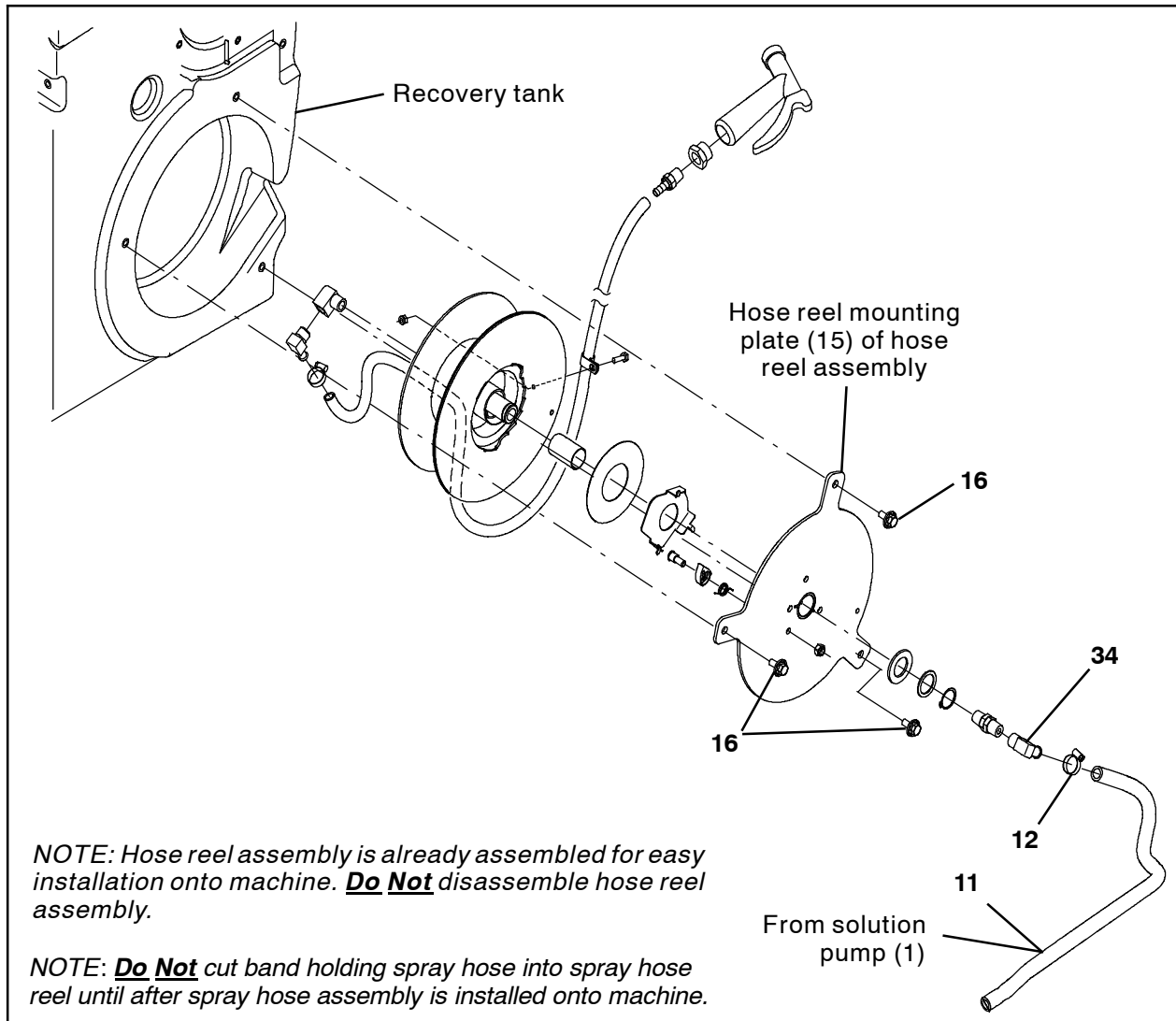


FIG. 9

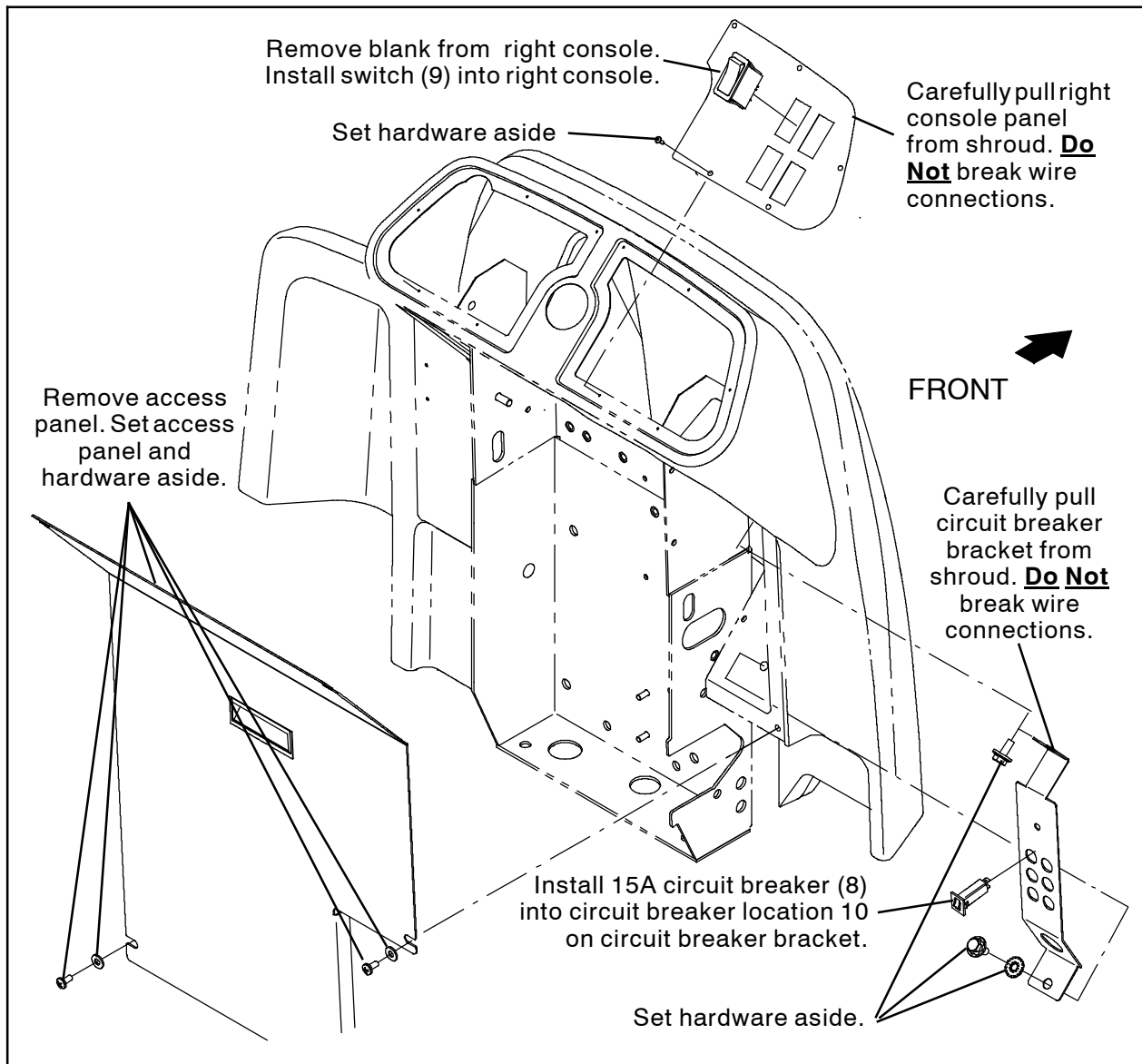


FIG. 10

20. Remove the access panel from the machine. Set the access panel and hardware aside. (Fig. 10)
21. Remove the hardware securing the right console panel to the machine. Set the hardware aside. (Fig. 10)
22. Carefully pull the right console panel from the machine. **Do Not** break any wire connections when removing the right console panel from the machine. (Fig. 10)
23. Remove the blank from the right console panel and install the switch (9) into the right console panel where the blank was previously installed. (Fig. 10)
24. Connect the main wire harness to the switch (9). (Fig. 10 / Fig. 11 / Fig. 12)
25. Reinstall the right console panel onto the machine. (Fig. 10)
26. Remove the hardware securing the circuit breaker bracket to the machine. Set the hardware aside. (Fig. 10)
27. Carefully pull the circuit breaker bracket from the machine. **Do Not** break any wire connections when removing the circuit breaker bracket from the machine. (Fig. 10)
28. Remove the 15A circuit breaker (8) into location 10 on the circuit breaker bracket. (Fig. 10)

29. Connect the main wire harness to the 15A circuit breaker (8). (Fig. 10 / Fig. 11 / Fig. 12)
30. Reinstall the circuit breaker bracket onto the machine. (Fig. 10)

31. Reinstall the access panel onto the machine. (Fig. 10)

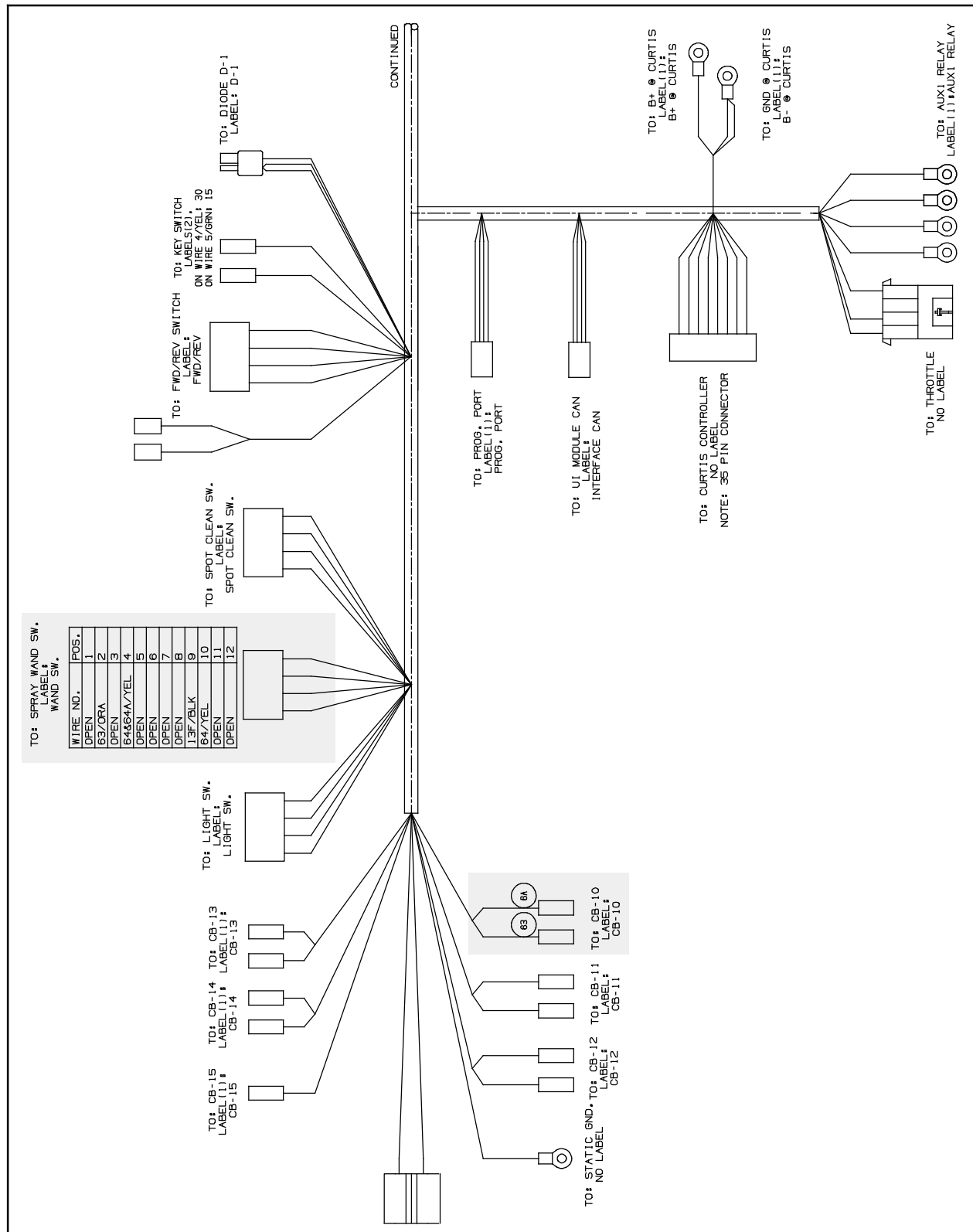


FIG. 11

32. **Machines equipped with optional detergent tank only:** Reinstall the vacuum fan(s) onto the machine. Reconnect the wire harness to the vacuum fan(s).
33. **Machines equipped with optional detergent tank only:** Reinstall the detergent tank onto the machine. Reconnect the hose to the detergent tank suction tube.
34. **Machines equipped with cylindrical scrub heads only:** Reinstall the debris trough onto the scrub head.

35. Reconnect the battery cable to the battery.
36. Fill the solution tank with water. Refer to the Operator Manual for instructions how to fill the solution tank.
37. Start and test the machine. Turn on the spray nozzle system and operate the spray wand. Check spray wand assembly and hoses / connections for leaks. Refer to the Operator Manual for instructions how to operate the spray wand.

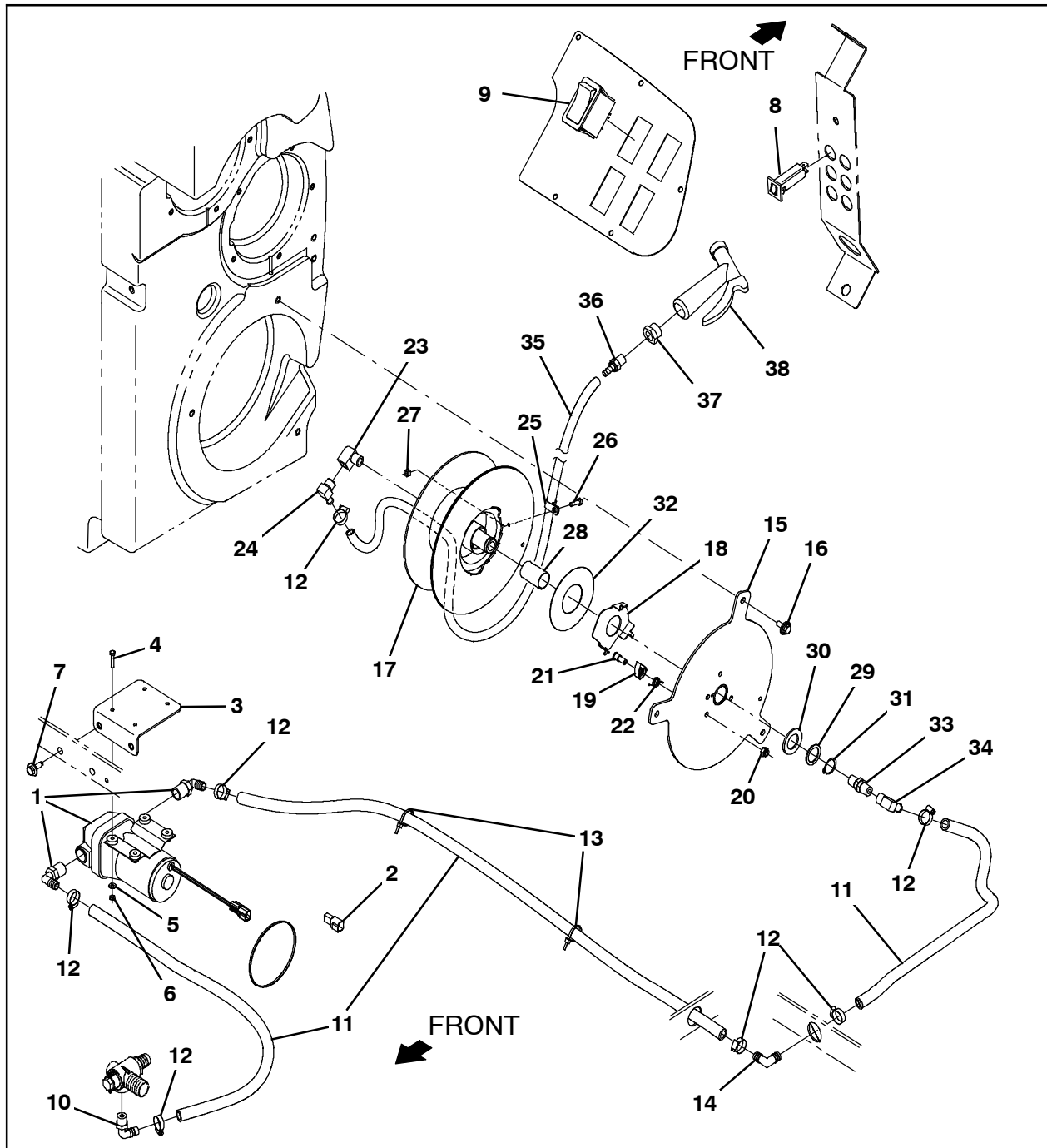


FIG. 13

RESETTING THE SPRAY HOSE REEL ASSEMBLY SPRING TENSION:

NOTE: Refer to Step 1 through Step 3 to reset the reel assembly spring tension on a spray hose assembly already installed on a machine. Refer to Step 4 to reset the reel assembly spring tension on a spray hose assembly not yet installed onto a machine.

1. Wrap the spray hose (35) evenly back onto the reel assembly (17). (Fig. 13)
2. Pull the spray hose (35) out from the reel assembly (17) until the reel assembly has turned at least three revolutions, adding tension to the spring inside the reel assembly.
3. Wrap the portion of spray hose (35) pulled from the reel assembly (17) back onto the reel.

4. Rewind the spray hose completely onto the reel and rotate the spray hose assembly mounting plate four complete turns clockwise to reset the spring tension. (Fig. 14)

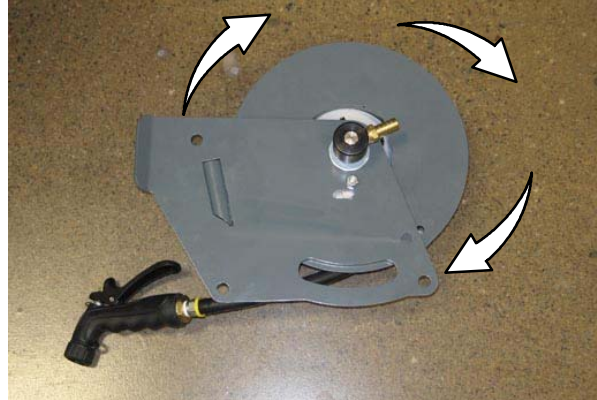


FIG. 14

Bill Of Materials For Spray Hose Kit, DI [T17] - 9020076

Ref.	Tennant Part No.	Description	Qty.
1	1054178	Pump, Soltn, Ele, 36vdc, 45psi	1
2	1056982	Diode, Ele, Plug	1
3	1207774	Bracket Wldt, Pump, Spray Hose	1
4	12316	Screw, Hex, M5 X 0.80 X 25, SS	4
5	01683	Washer, Flat, 10, SS	4
6	09739	Nut, Hex, Lock, M5 X 0.80, NI, SS	4
7	1037346	Screw, Hex, M8 X 1.25 X 25, 9.8, SEMS	2
8	1064188	Circuit Breaker, 15.0a, Resettable	1
9	398500	Switch, Rocker, Dpdt, On / None / On	1
10	64778	Fitting, Plstc, E90, BM08/PM06	1
11	1011837	Hose, Afmkt, PVC, Brd, 0.50id, 12ft, Clr	1
12	54333	Clamp, Hose, Wormdrive, 0.31- 0.88d, .31w	7
13	130773	Tie, Cable, Nyl, 11.0l, .14w, 3.0 Max. D	2
14	63987- 1	Fitting, Plstc, E90, BM08/BM08	1
15	1206482	Plate Wldt, Mtg, Hose- Reel [T17]	1
16	1020341	Screw, Hex, M8 X 1.25 X 20, SS, SEMS	3
17	1206456	Reel Assy, Hose, Large	1
18	1203947	Washer, Retainer, Spring	1
19	1201393	Pawl, Ratchet	1
20	08709	Nut, Hex, Lock, M8 X 1.25, NI	1
21	1056719	Bolt, Shld, .41d X 0.35, M8 X 1.25	1
22	1201423	Spring, Torsion, Hose Reel	1
23	24584	Fitting, Brs, E90, PF06/PM06, Spcl	1
24	1060128	Fitting, Brs, E90, BM06/PM06, Short	1
25	33584	Clamp, Cable, Stl, 0.63d X 0.50w, 1hole	1
26	06943	Screw, Hex, M6 X 1.00 X 20, 8.8	1
27	08708	Nut, Hex, Lock, M6 X 1.00, NI	1
28	1057816	Bushing, Sleeve, 1.00b 1.13d 1.750l, Fgl	1
29	1057814	Washer, Thrust, Plstc 1.02b 1.38d	1
30	32598	Washer, Flat, 1.02b 1.75d .12, Stl	1
31	09005	Ring, Retaining, Ext, 1.00d, Basic	1
32	1066919	Washer, Thrust, 50.0b 110.0d 0.79w	1
33	1200394	Fitting, Swivel, Str, PF06/PM06, Brs	1
34	47388	Fitting, Brs, E90, EM08/PM06	1
35	9020252	Hose Kit, Spray, Afmkt [T17]	1
36	1060428	Fitting, Stl, Str, BM06/PM06, Swivel	1
37	1027976	Fitting, Brs, Str, PF06/PM12	1
38	769785	Nozzle, Spray, Gun	1

TENNANT COMPANY
P. O. Box 1452
Minneapolis, MN 55440-1452